

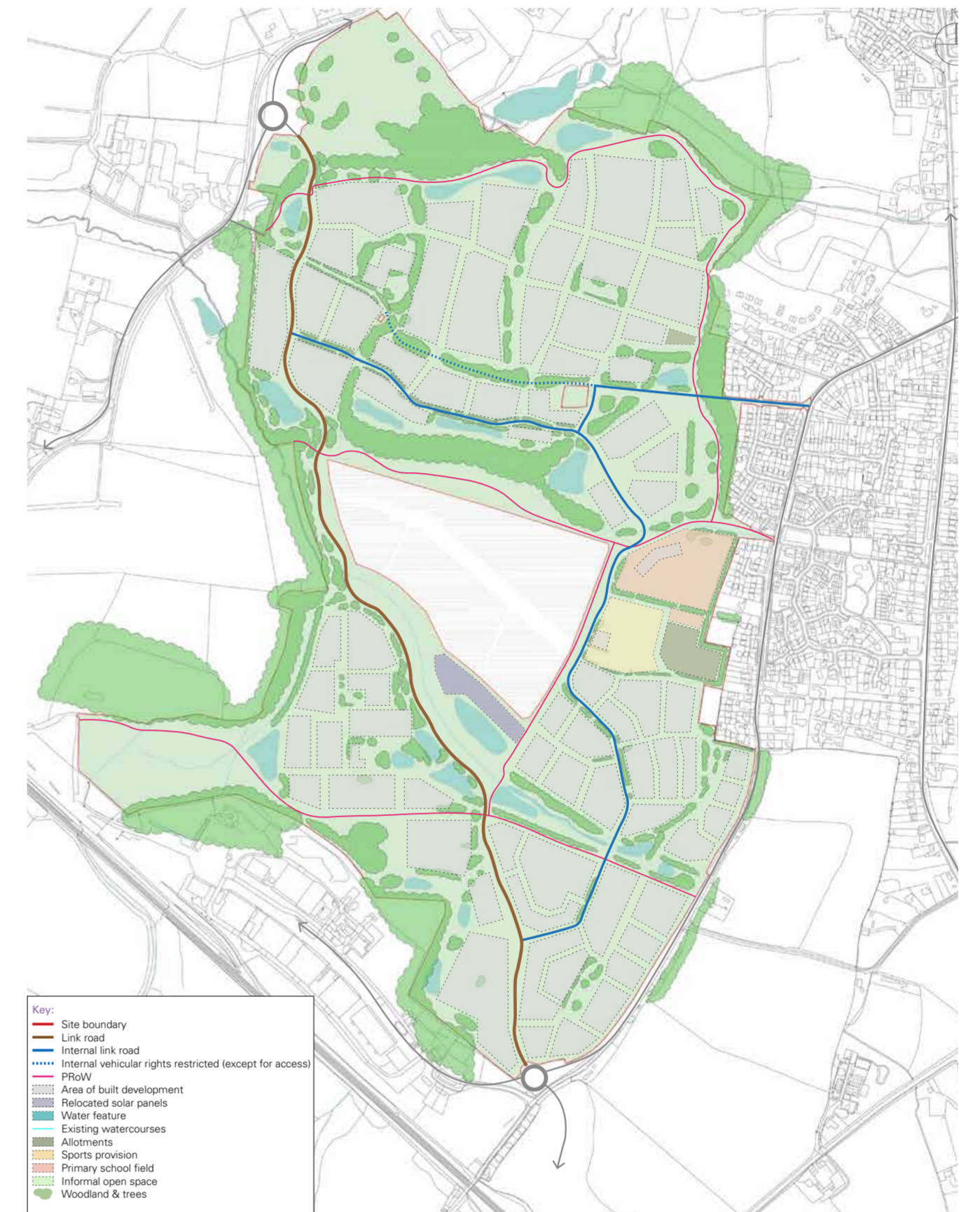
One Horton Heath

What has been approved?

Thank you for taking the time to view our proposals for the new **Primary School, Sports Facilities and Allotments** that are an integral part of the One Horton Heath development. This major mixed-use development has already received a **resolution to grant** outline planning permission (LPA ref no. O/20/89498), meaning the principle of development is already agreed. The approval allows for up to 2,500 homes, a local centre, a primary school and community facilities including sport pitches, pavilion, allotments and commercial floorspace to be delivered by Eastleigh Borough Council.

We're preparing a **Reserved Matters** planning application for the school, sports facilities and allotments in Horton Heath. This will set out the detailed design, layout, appearance, landscaping, and access arrangements.

We'd like to hear your views on these proposals.



The School, Sports Facilities & Allotments

Where is it and what is being proposed?

The three-form-entry (3FE) Horton Heath Primary School, sports facilities and allotments will be located centrally in the development.

The school will be located to the south of the local centre and forms part of the wider “community hub”. As such, the school is a key focal point for the wider scheme.

The sports facilities (including the pavilion), and the allotments will be located next to the school and just to the north of the homes in Upper Acre. There will be a secure link from the school site to the Sports Pitch.



- Community-facing school forming a local civic focus
- Clear, safe layout with managed drop-off and access
- Landscaped grounds supporting outdoor learning
- Designed for 3 Form Entry capacity
- Strong walking and cycling connections



- Integrated early years and reception provision
- Dedicated outdoor learning and play spaces
- Forest school supporting nature-based learning
- Safe, child-focused environments
- Convenient local provision for families



- Full-size 3G pitch for school and community use
- Free-play and informal recreation areas
- Extensive community allotments
- Shared parking with southern access
- Facilities available throughout the day



Site plan

What is being proposed?



The school will – eventually – provide spaces for 630 pupils with three forms of entry from year R to year 6. A school Hall, studio, outside learning gardens, MUGA, grass sports pitches and a forest school are all key features of the brief to this new school.

The school square provides a welcoming arrival point for parents and students.

The south parcel of the site will include a full-size 11-a-side all weather football pitch with adjacent changing rooms, club house and toilets. We are also proposing to include a substantial allotment area to the east of the sports pitch.

Staff parking for the school is clearly organised, with additional parking located near the sports facilities to reduce congestion at pick up and drop off times. This parking will also serve the sports pitch – with a number of additional parking spaces for the allotment area also being proposed.

- A - Discovery Pond**
- B - Forest School**
- C - School Square**
- D - Outside teaching space**
- E - Main Playground**
- F - Staff Parking**
- G - Multi-use Games Area**
- H - Full-size 3G sports pitch**
- I - Sports Pavilion**
- J - Public Playing Field**
- K - Allotments**



What is being proposed?



Site plan - School

The proposed primary school is designed to:

- Have classrooms with dual aspect – views to two sides. Replace narrow corridors with generous learning zones for each year group cluster.
- Have a distributed library throughout the learning zones with resources tailored to the relevant year group.
- Provide breakout rooms to support small group learning.
- Provide external learning gardens for all classes on the ground floor (year R to year 3).
- Be fully inclusive for learners with a range of additional needs – with use of natural materials and SEND friendly materials throughout.

The school is designed to be a community-facing building with carefully designed community access to use of shared facilities such as the school hall.

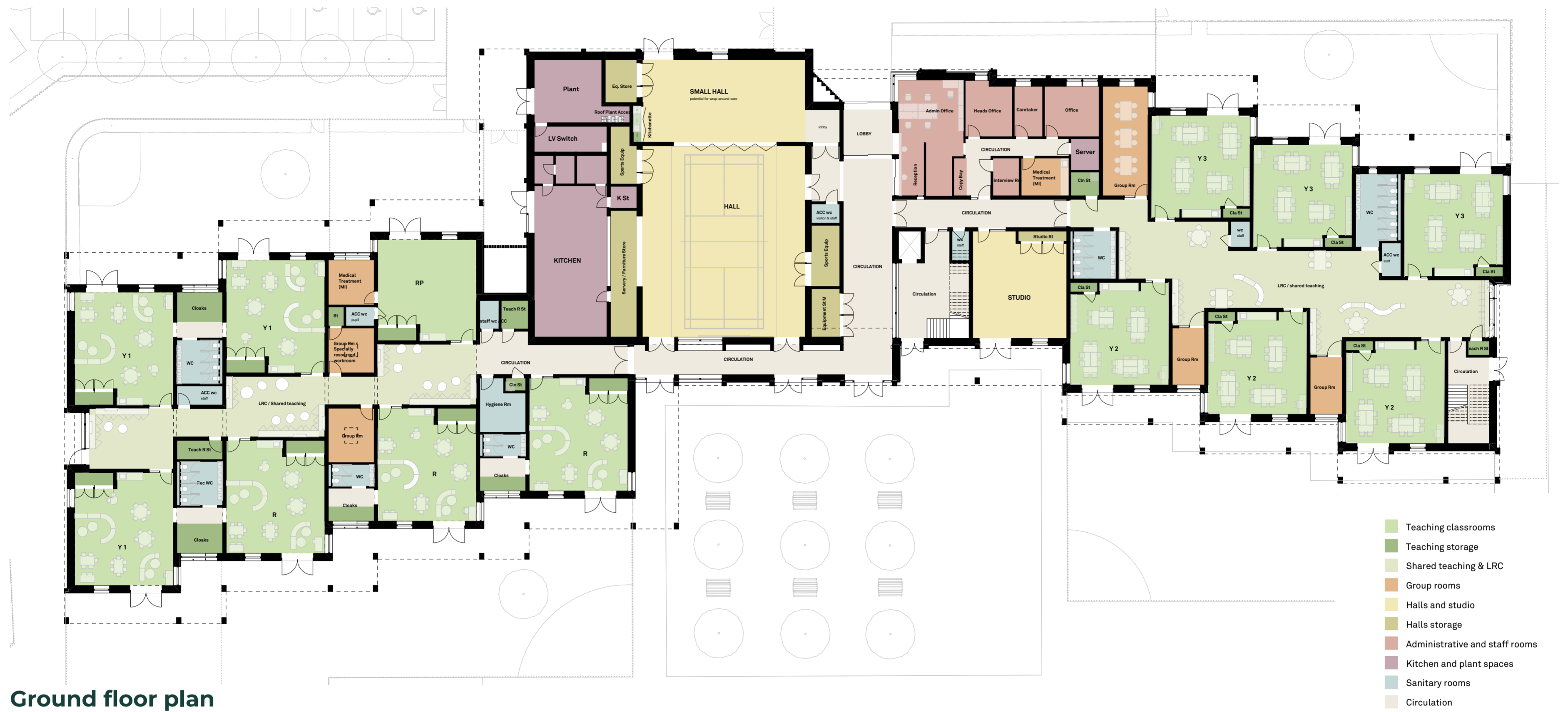
Safe, clearly defined access and servicing arrangements support safeguarding and effective school management.



Concept diagram



What is being proposed?



Ground floor plan



Main entrance and school square



What is being proposed?



First floor plan



Main elevation



Rear elevation



What is being proposed?

Classrooms provide calm, welcoming environments that support effective teaching and positive learning. Simple layouts, large windows, natural ventilation and the use of sustainable natural materials are all intended to create a sense of calm, comfort and focus. Clear sightlines allow easy supervision, while minimising noise and distraction to promote concentration and wellbeing. On the ground floor, all classrooms connect to outdoor areas, extending learning beyond the classroom and supporting a range of learner-centred teaching approaches.



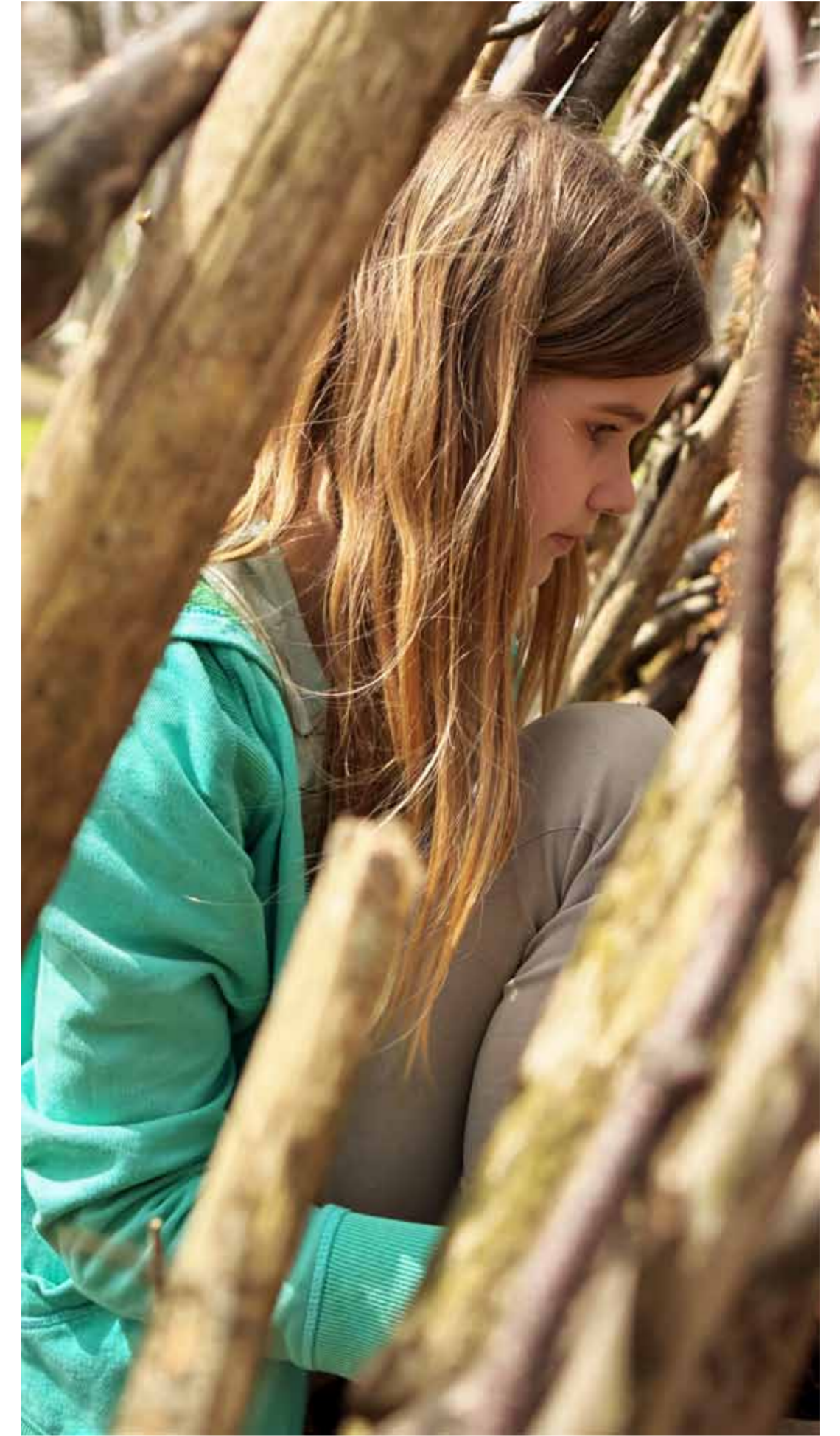
Typical classroom



Reception classroom



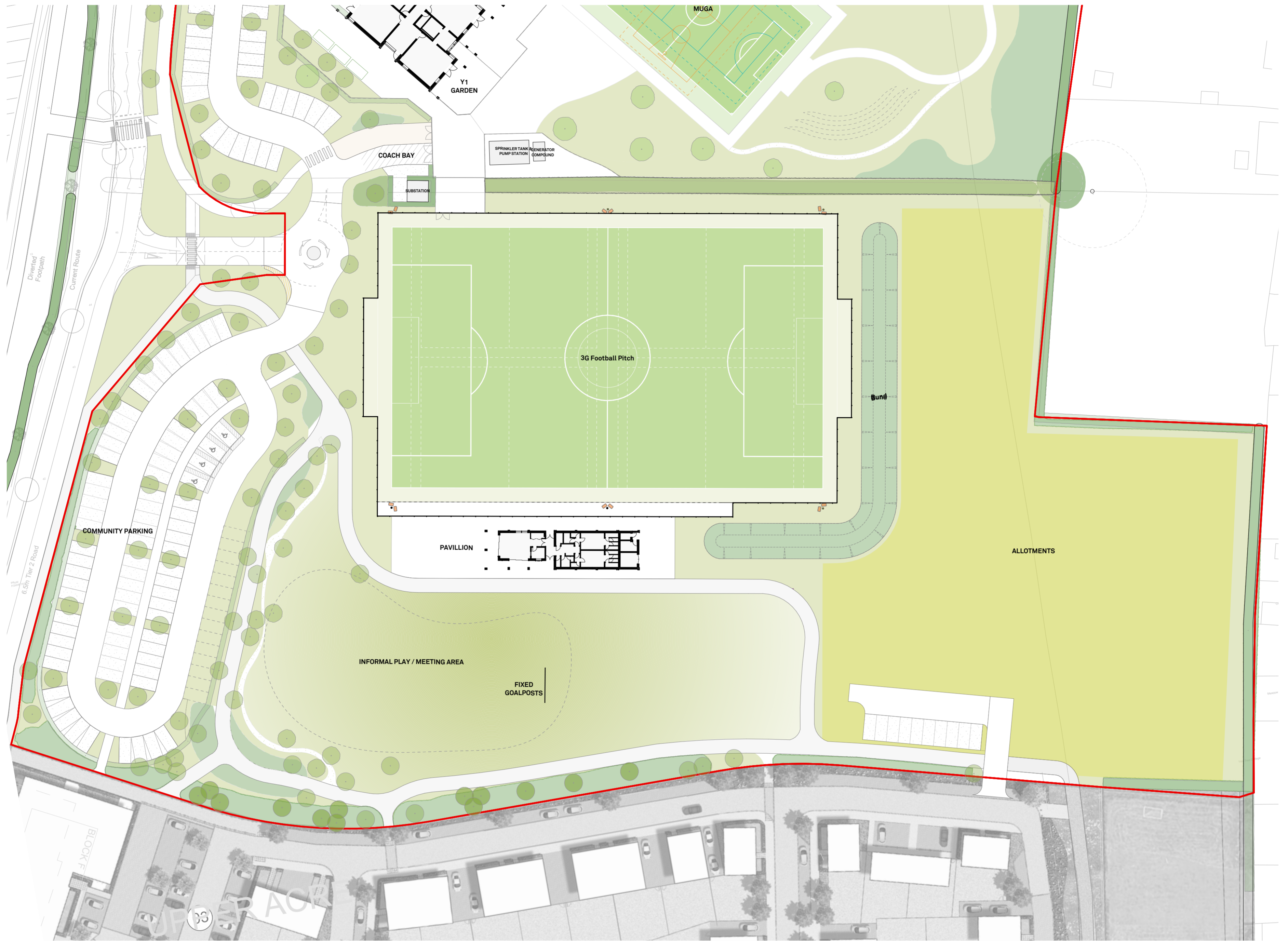
Landscape proposals



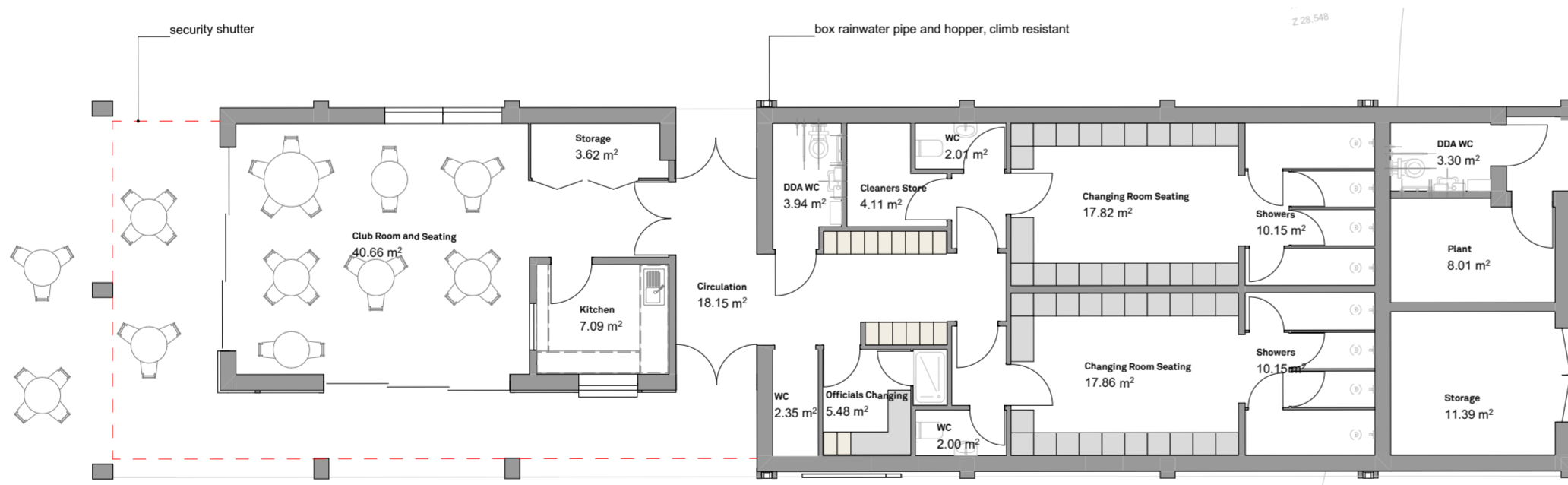
Discovery pond



What is being proposed?



Sports facilities and allotments plan



Floor plan

The sports and allotment parcel includes a 3G all-weather pitch, community allotments, and a pavilion building.

The pavilion is designed to support both the adjacent informal grass play area and the full-size 3G pitch, providing a clubhouse, changing facilities, and an externally accessible toilet.



Main (south) elevation

Its location and layout enable efficient operation during peak periods, supporting both school use and wider community access outside school hours.

Approximately 80 parking spaces are proposed to serve the 3G pitch and grass play area, with the layout also accommodating peak school pick-up and drop-off arrangements.



Landscape proposals



Open space and sports pavilion

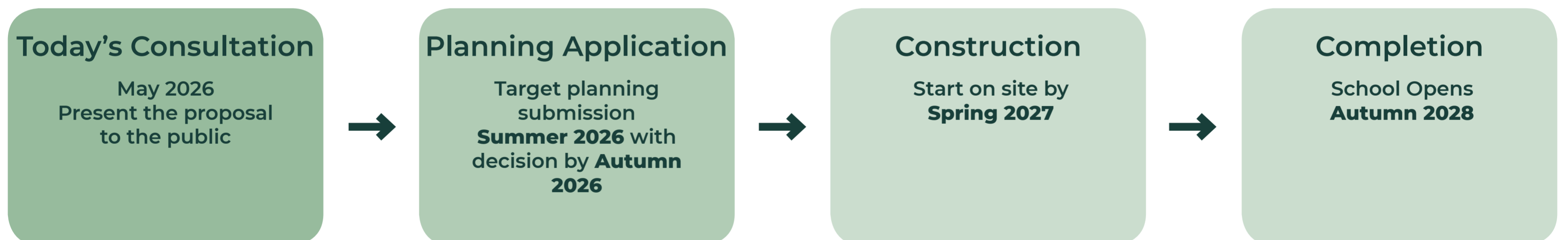


The plan

What's next?



Allotments



We welcome your feedback and comments to help deliver a scheme for Eastleigh to be proud of.

We aim to submit a planning application for the Horton Heath school, sports pitches and allotments in Summer 2026.

**Thank you for reviewing the proposals.
We look forward to hearing your views.**



Scan this QR code to review all of this information in your own time and share your feedback.

